

8th Annual

# Gem, Mineral & Fossil Show

SATURDAY—FEBRUARY 25, 2012

10AM—4PM

Mineral Specimens

Lapidary Rough, Slabs and Cabs

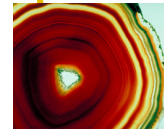
Fossils, Gemstones

Finished Jewelry

Decorative Items, Tools

Auctions and Children's Activities

Suggested Donation of \$2 per adult



*First Presbyterian Church Of Lakeland  
175 Lake Hollingsworth Dr.  
Lakeland, FL*

CONTACT JIM REED 863-644-6665

OR CINDY REED 863-255-5256

DIRECTIONS ON BACK OR

[WWW.BONEVALLEY.NET](http://WWW.BONEVALLEY.NET)

*SUPPORT 3 GROUPS  
WITH 1 EVENT*

Food Available from:

Boy Scout Troop #104

Girl Scout Cookies, too.



Imperial Bone Valley Gem, Mineral & Fossil Society

# First Presbyterian Church 175 Lake Hollingsworth Dr. Lakeland, FL

<http://www.fpclakeland.org/contact-us/map--directions/>

## Directions:

From Tampa: Take I-4 to exit #28 on your RIGHT to get on W MEMORIAL BOULEVARD towards LAKELAND / US-92. Drive for 3.6 miles. 5. Turn RIGHT onto N FLORIDA AVENUE. Drive for 0.3 miles. 6. Turn LEFT to get on US -98 S (Bartow Hwy). Drive for 1.3 miles. Turn RIGHT onto HOLLINGSWORTH ROAD. Drive for 0.6 miles. 8. Turn LEFT onto LAKE HOLLINGSWORTH DRIVE. Drive for 0.2 miles.

From Orlando: Take I-4 to exit #32 on your RIGHT towards US-98 / LAKELAND / DADE CITY. Drive for 0.3 miles. 5. Keep SLIGHT LEFT at the fork towards US-98 S towards LAKELAND. Drive for 2.7 miles. 6. Turn LEFT to get on US-98 S. Drive for 1.3 miles. 7. Turn RIGHT onto HOLLINGSWORTH ROAD. Drive for 0.6 miles. 8. Turn LEFT onto LAKE HOLLINGSWORTH DRIVE. Drive for 0.2 miles.

From Points South: Directions: Take the Bartow Hwy (US-98 S) until you get to Hollingsworth Rd. at Lakeland High School. Turn onto Hollingsworth Rd (toward the school). At the lake veer Left onto Lake Hollingsworth Rd. FPC is on the left.

