



# STONES & Bones



## President's Letter

This is my last letter in this space. Next month if I have something to add, it'll be in the "Editor's Letter" space. My thanks to everyone who agreed to hold an office this year. A special thanks to Wayne Bryan, your new President. I think Wayne will do a great job and I'm looking forward to the next year. I plan to do everything I can to make this an easy transition. I know that Laurie has already been working with Kay McQuown who will replace her as Secretary. Please come to the meetings and show our new officers your support. Laurie and I are looking forward to spending the meetings in the audience instead of the limelight. This will be the first time since I joined in 2005 that I get to sit with Jim.

Speaking of meetings, I can't wait for the December picnic at Happy Place. We had such a nice time last year. I am hoping for better weather, but I know it'll be fun no matter what. Details and a map are on page 4. Now, to figure out what dish I'm bringing and find a present. Oh, this year I promise to print out the words to "Night Before Christmas" so I don't have to read it on a 4" screen.

I'm working on the show flyer and almost have it finished. Since we had such a close vote on the design, I'm going to send out 2 and you can choose the one you wish to distribute. Look for them in the next week or so. I'll also send them to other clubs in Florida. The show is listed on the SFMS website and on the Rock & Gem Magazine website. Now is the time to start thinking about advertising. If you have suggestions or have contacts, let us know.

November was my last official meeting. I've enjoyed my 4 years as President and it's been a pleasure serving all of you. I think that we've made a lot of headway in growth and with everyone's help, it is a great club. We have a lot of programs in motion and next year will be even better than the last. I want to thank everyone for all your help and support. It is "our" club and we all need to put the effort into making it better.

See you at Happy Place

Cindy Reed, President

### Inside this issue:

President's Letter	1
Minutes	2
Birthdays & Anniversaries	3
Member Concerns	3
December Meeting Shows	4
Bench Tips	5
Jim's Rock Corner	6
Statement of Principals	6
Officers	7
Meeting Location	7

**It's renewal time. Your new application was sent to you last month. We need it back before January 1, 2012. (if you need another copy, please let me know). This is your last chance.**

**We bought 10 copies of the 2012 Agate Calendar. These will be available to members for \$10 each. A savings of \$1.95 (plus shipping)....and \$3 of each sale goes to the club. You can still get one at the December picnic. I think we have 3 or 4 copies left**



## Minutes for November 10, 2011

The November 10, 2011, meeting was called to order, at 7:00 pm. The Pledge of Allegiance was recited. There were twenty members present. A motion was made by Jan Liles and seconded by Susan Burns to accept the October minutes as published in the newsletter. The motion carried unanimously. Treasurer Debbie Rydberg was unable to attend tonight and had given the Treasurer's report to Cindy Reed.

Shop Report: Jerry Crocetti fixed the 12" saw. In appreciation, a day at the shop was given to him.

Amy Bland will teach a beginning silver class and is working on the equipment for it. Cindy Reed will be teaching enameling and cold connections. Jim Reed will teach intarsia and cabbings; he's a good teacher and an excellent cabber.

### Show update:

Cindy Reed has prepared various flyer options, please cast your vote for the flyer of your choice by placing a check mark on it. They are on the table for your vote. We need to get the flyers out soon.

Dan Blanchard reported that Boy Scout #104 can sell food at the show. They will prepare for about 300 attendees. Typically they have a sandwich, chips and beverage for one price. Separate items will be available, too. Discussion was held about the club holding a bake sale at the show.

One of the last shows Cindy and Jim Reed attended had the electric outlets overhead, rather than on the floor covered with tape; perhaps we should consider this. Also, there was a "wheel of fortune" like spinner device. There was a grid on it with various items attached to it. It costs \$1.00 spin and you won the item you landed on. They will try to make one.

Those interested in a scholarship to William Holland (2012), need to submit an application. Please include what your interest is and why, and what you'll do with the knowledge you'll gain. The club anticipates giving two scholarships.

The agate calendars are still available, Jim and Cindy Reed paid \$7.00 per calendar and are selling them for \$10.00, with \$3.00 from each calendar going to the club. They normally sell for \$11.95, plus shipping.

The December meeting will be held on 12-4-11, 2:00 p.m. at Harold Lehman's "Happy Place." Bring a wrapped, rock related gift costing about \$5.00 for the gift. Directions to "Happy Place" will be in the newsletter and on the website.

Reminder, to get your top ten choices from the SFMS video/DVD options to Cindy Reed. She will forward them to the Program Chairs. Jim and Cindy Reed are communicating with Gene McDevitt for his return to our club in either January or February 2012 to discuss, show and sell his Koroit Opals.

Elections were held and the following were accepted:

**Officers:** Wayne Bryant President; Roger McQuown 1st Vice President; Susan Burns 2nd Vice President; Kay McQuown Secretary; Debbie Rydberg Treasurer

**Board Members:** Cindy Reed Past President; Susan Burns 1-Year Term; Stormie Burns 2-Year Term; Linda Crocetti 3rd year term board member

**Committee Chairs:** Program Chair: Susan Burns and Laurie Williams; Corresponding Secretary: Laurie Williams; Annual Show: Jim Reed; Education: Jim and Cindy Reed; Field Trip: TBA; Historian: Jan Liles  
Shop Manager: Jim Reed - Susan Burns is back-up; Parliamentarian: Amy Bland; Webmistress/editor: Cindy Reed.  
Stormie Burns and Cindy Reed will update the website. A vote was held, Lorraine Auger motioned, Jan Liles 2nd and motion passed unanimously.

The motion was made by Susan Burns and seconded by Charles Rainey to adjourn the meeting at 7:40 p.m. Tonight's program will be on Channel Setting with Jim Reed.

Respectfully Submitted  
Laurie Williams – 11-10-11

Thanks to Laurie for her years of service as our Secretary.



## Birthdays and Anniversaries

### Birthdays

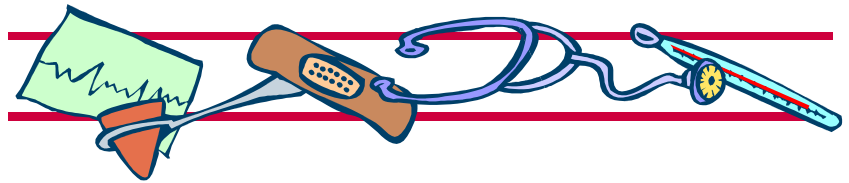
Dan & Joshua Blanchard  
 Brenda Bryan  
 Carole De l' Agnelle  
 Ruth Dumas  
 Mark Heathman  
 Jo Smilie

### Anniversaries

Jeff & Amy Bland  
 Stuart Laeder

### Birthstones

Modern Birthstone	Turquoise, Blue Topaz, Tanzanite
Traditional Birthstone	- Zircon, Lapis
Mystical Birthstone	- Onyx
Ayurvedic Birthstone	- Ruby
Other	- Chrysoprase, Agate



### Member Concerns

A long time member passed away in November. Martha Satterfield was a delightful woman with a great sense of humor. When I first joined the club, her email address was mad\_martha. I understand her cancer returned and she was ready to let go. Please remember her family in your prayers.

Bill Niazy's S.O. is not doing well. Please continue to keep them in your thoughts and prayers, too. She has a lot of medical issues.

As always, please remember Gene and Juanita, Kim Moore and Mary Rimer.

If you know of any other members or their families that we need to remember, please let me know. We'd also like to post good things that happen—let us know about them, too.

Thanks



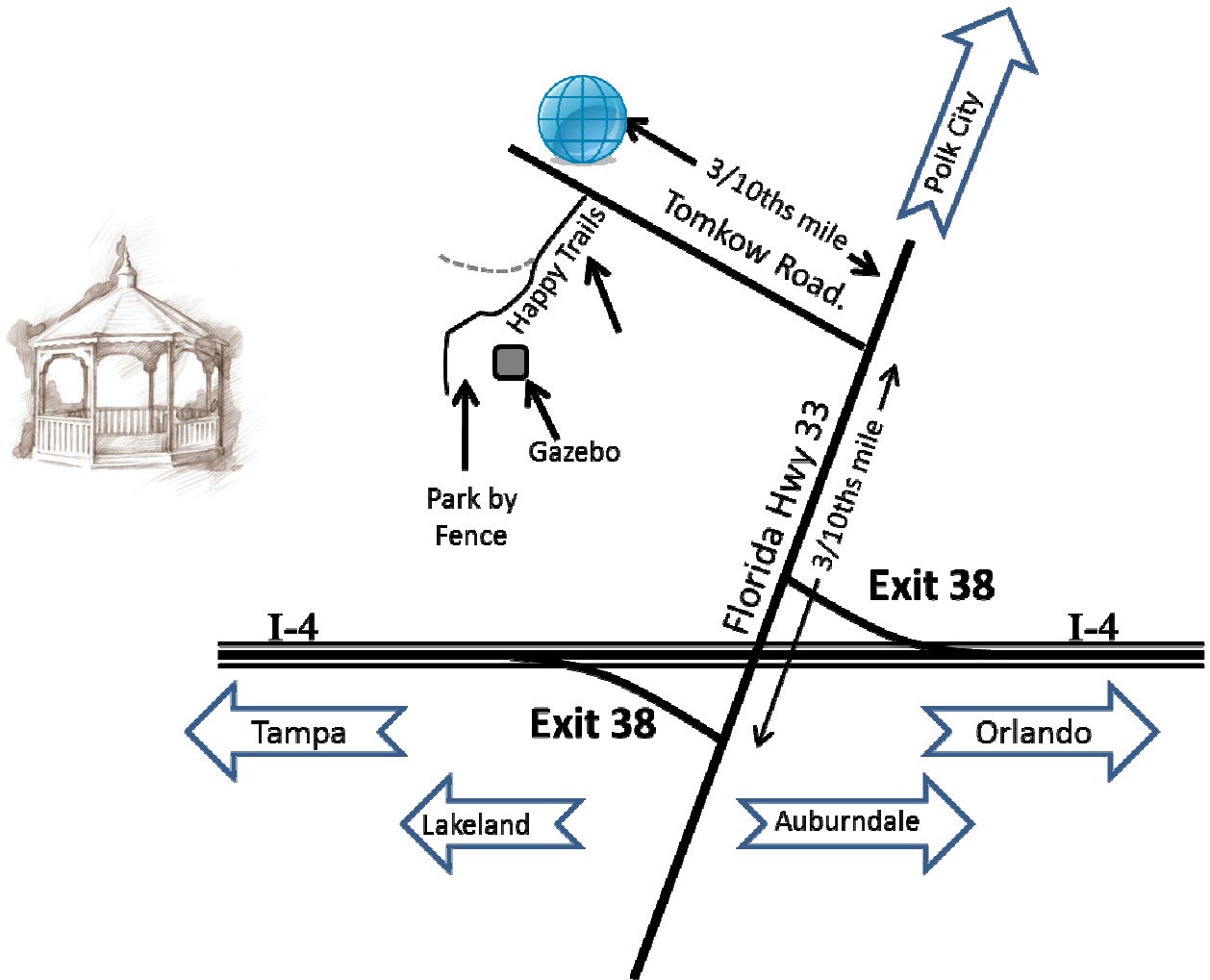
**December Meeting and Potluck Picnic**

As stated above, December’s meeting will be a potluck dinner. Please bring a dish to share with your fellow members. The club will provide ice, paper plates, cups and plastic utensils. If you’d prefer something a little sturdier, you can bring your own. I’ll bring a couple of gallons of unsweetened tea. Please bring your beverage of choice. We will have a gift exchange so if you’d like to participate, please bring a wrapped gift, approx. \$5 value (preferably rock, mineral or fossil related). I hope you can all join us.

Our host for the day, Harold Lehmen, is also a rock lover. Members are encouraged to bring some of their pieces for a show & tell as an extra thank you for letting us use his pavilion. The club will be presenting him with a couple of rocks as payment.

The location is Happy Place off Tomkow Road. The map is below, but basic directions are:

I-4 to exit 38, head North on Hwy 33 approx. 0.3 miles, turn left on Tomkow Rd, go approx. 0.3 miles and turn left on Happy Place, and stay left at the “Y”. There’s a globe on the right side of Tomkow Rd across the street from Happy Place.





## **December 2011 Shows and Swap Meets**

**12/2-4/2011—SPRING HILL, FLORIDA: Annual show; Withlacoochee Rockhounds;** Slovene American Club, 13383 County Line Road; Fri. 9-5, Sat. 9-5, Sun. 9-5; adults \$3, students \$1, children (under 12) free; demonstrations, gem and mineral auction, replica of Aaron's Breastplate, famous diamonds, dealers, rocks, minerals, fossils, jewelry; contact Ralph Barber, (352) 200-6852; e-mail: barbersbloomers@hotmail.com; Web site: <http://withlacoocheerockhounds.com>

## **Upcoming Shows**

**1/13-15/2012— LARGO, FLORIDA: 36th annual show; Pinellas Geological Society;** Largo Cultural Center, Parkside Room, 105 Central Park Dr.; Sun. 11-2; free admission; contact: Hugh Sheffield, (727) 894-2440 or (727) 707-3236

**1/15-16/2012--DeLAND, FLORIDA: 39th annual show; Tomoka Gem & Mineral Society;** Volusia County Fair Grounds, State Rte. 44; Sat. 10-6, Sun. 10-5; adults \$4, children 12 and under free; hourly door prizes, grand prize, silent auction, kids' activity table, TFG Faceters Guild demonstrations and Q&A, other demonstrations; contact Florence D. Nordquist, 521 S. Palmetto Ave., Daytona Beach, FL 32114, (386) 226-4032; e-mail: fndesign@aol.com; Web site: [www.tomokagms.org](http://www.tomokagms.org)

**2/29-30/2012— PANAMA CITY, FLORIDA: 21st annual show; Panama City Gem & Mineral Society;** Bay County Fairgrounds, 2230 E. 15th St.; Sat. 9-5, Sun. 9-4; free admission; exhibits, door prizes, gems, minerals, fossils, jewelry, beads, lapidary art, wire wrapping, silversmithing; contact: Joseph Schings, 224 Collinfurst Square, Panama City, FL 32404-8530, (850) 871-1846; e-mail: mojo3002@comcast.net

**2/11-12/2012— MERRITT ISLAND, FLORIDA: Annual show; Central Brevard Rock & Gem Club;** Kiwanis Island Park, 950 Kiwanis Park Rd.; Sat. 10-5, Sun. 10-5; adults \$3, children (12 and under) free with adult; rough and cut gems, minerals, fine jewelry, equipment, lapidary supplies, books, beads, exhibits, demonstrations; contact: Erleen Estes, (321) 632-3201

**2/25/2012 – IMPERIAL BONE VALLEY GEM, MINERAL & FOSSIL SOCIETY, 8<sup>TH</sup> Annual Gem, Mineral & Fossil Show & Sale;** Sat: 10AM-4PM, First Presbyterian Church located at 175 Lake Hollingsworth in Lakeland, Florida  
Children's sandbox, demos, raffle and silent auction, Show contact: Jim Reed, 863-644-6665  
Email contact: [rocks57@tampabay.rr.com](mailto:rocks57@tampabay.rr.com) <http://www.bonevalley.net>

**3/2-3/4/2012—LARGO, FLORIDA: 42st annual show and sale; Suncoast Gem & Mineral Society;** Minnreg Bldg., 6340 126th Ave. N., between 66th St. and US19 N, south of Ulmerton Rd.; Fri. 10-6, Sat. 10-6, Sun. 10-5; adults \$5 (three days), Web site coupon, students \$4, children under 6 free; dealers, club sales, finished and un-finished gems, jewelry, beads, minerals, equipment, tools, magazine back issues, prize drawings, displays, grab bags, lapidary demonstrations, beading and wire wrapping; Suncoast Gem & Mineral Society, P.O. Box 13254, St. Petersburg, FL 33733-3254; Web site: [www.sgams.com](http://www.sgams.com)

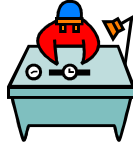
**3/24-25/2012--TAMPA, FLORIDA: Show, "Fossil Fest 2011"; Tampa Bay Fossil Club;** Florida State Fairgrounds, US 301 and I-4; Sat. 9-6, Sun. 10-4; fossils, artifacts, gems, minerals, shells, exhibits, "how to" seminars, kids' games, fossil mine, raffles, door prizes, silent auction; contact Barbara Fite, (813) 977-0892; e-mail: [bfite@tampabay.rr.com](mailto:bfite@tampabay.rr.com); Web site: [www.tampabayfossilclub.com](http://www.tampabayfossilclub.com)

Some links to help you keep track of upcoming shows.

<http://www.rockngem.com/showdates>

<http://www.jewelryshowguide.com/event/>

## BenchTips by: Brad Smith



### REMOVING A STONE FROM BEZEL SETTING

If you've forgotten to use dental floss and got your stone caught in a bezel, there's one thing you can try before starting to pry. Find some sticky wax or beeswax. Roll it into a pencil-sized cylinder and stick the end onto the top of the stone. Mold it on well and yank.

If all else fails, you either have to very carefully pry open the bezel with a sharp knife blade or drill a small hole in back of the stone and push it out with the point of a scribe.

More BenchTips by Brad Smith are at [Yahoogroups.com/group/BenchTips/](http://Yahoogroups.com/group/BenchTips/) or [Facebook.com/BenchTips/](http://Facebook.com/BenchTips/)

## Jim's Rock Corner



## New Finds and New Work

I am always looking for different or unusual stones to buy for lapidary purposes. I especially like old collections where you can find some interesting materials for cutting slabs. On our recent September 2011 trip to the rock & jewelry shows in Denver, Colorado, I was able to purchase some new material that just came out of Sonora, Mexico. If you recall, recently some different material has come out of the area in Sonora Mexico that has enthralled the lapidary community; specifically Sonora Sunrise. Sonora Sunrise is a mixture of chryscolla (bluish) and cuprite (reds). This time in Denver we were able to find one dealer in the wholesale area selling Sonora dendritic rhyolite rough. It is often hard to see the interior until you slab the rough. I wish I had bought more than 3 pieces of rough. I brought a few of the slabs of the first one to the October meeting and Susan Burns grabbed them. The second piece is the slab below on the right. But the third piece turned out to be the best. The slab is the one on the left—what a fantastic pattern! The coloration is just incredible. I cannot wait to cut a cabochon of this material. I've heard that it doesn't polish to a fantastic finish, but with a pattern like you can see in the material, I'm not that concerned.



I'm starting to create rings to sell at the Lakeland Downtown Farmers Curb Market. I finished a ring this week containing a Persian turquoise. This is an actual material from Iran that I purchased at the rock show this year from Ron Williams, one of our members. His daughter is over in the country sending him cut stones. This is the classic robin egg blue turquoise. This silver ring is adjustable—in other words the size can be adjusted by about a half-size to fit the finger. I was taught this technique by Cindy to just soldering one side of the half round wire to the base. Then push the base in either direction to fit the finger.





## Statement of Principals

1. To stimulate interest in the collection, study, identification, and classification of gem, mineral & fossil specimens.
2. To disseminate knowledge of lapidary work and classification of gems, minerals & fossils, and their applications in the arts and sciences.
3. To encourage and facilitate instruction in the various elements of mineralogy and lapidary work and identification and classification of fossils.
4. To arrange and conduct field trips for collection of specimens.
5. To participate by displaying and taking part in all local, state, and Federation shows to the greatest possible extent.
6. To encourage adherence to the American Federation of Mineralogical Society's Code of Ethics.



### Officers for 2011

President	Cindy Reed - 863-255-5256 Cdreed57@tampabay.rr.com
1 <sup>st</sup> VP	Roger McQuown
2 <sup>nd</sup> VP	VACANT (membership chairman)
Secretary	Laurie Williams
Treasurer	Debbie Rydberg
<b>Board Members</b>	
Past President	Jan Liles 863-519-9449
1-Year Term	Jim Reed—863-644-6665
2-Year Term	Susan Burns
3-Year Term	Stormie Burns
<b>Committee Chairs</b>	
Program Chairman	Vacant
Corresponding Secretary	VACANT
Annual Show	Jim Reed 863-644-6665
Education	VACANT
Field Trips	VACANT
Historian	Jan Liles 863-519-9449
Shop Manager	Jim Reed 863-644-6665 rocks57@tampabay.rr.com
Parliamentarian	Vacant
Snacks	Jan Liles
Webmasters	Cindy Reed 863-644.6665

### Location of Meetings (except this month)

**First Presbyterian Church**  
**175 Lake Hollingsworth Dr.**  
**Lakeland**

<http://www.fpclakeland.org/contact-us/map--directions/>

Directions: Take the Bartow Hwy (US-98 S) until you get to Hollingsworth Rd. at Lakeland High School.

Turn onto Hollingsworth Rd (toward the school). At the lake veer Left onto Lake Hollingsworth Rd. FPC is on the left. You will pull in the drive right next to the Hollingsworth apartments and park on that side. There's a children's playground there, so you can't miss it. If you go in the North entrance, just drive around the building and come to the other side. We'll have the front double doors open (facing the lake). The room # is 221

# STONES AND BONES

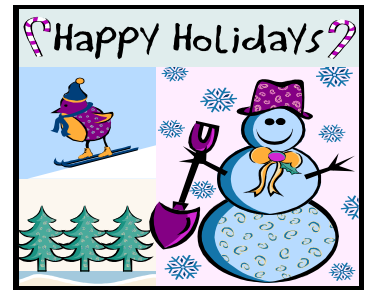
The official Publication of:  
Imperial Bone Valley Gem, Mineral & Fossil Society, Inc.  
P.O. Box 2054  
Auburndale, FL 33823



FIRST CLASS POSTAGE  
Address Correction Requested

We're on the Web:

[www.bonevalley.net](http://www.bonevalley.net)



## MEMBERSHIP MAILING ADDRESS:

Imperial Bone Valley Gem, Mineral and Fossil Society, Inc.  
P.O. Box 2054  
Auburndale, FL 33823

Imperial Bone Valley Gem, Mineral and Fossil Society, Inc. meets at 7:00 P.M., the second Thursday of each month at the First Presbyterian Church, 175 Lake Hollingsworth Dr, Lakeland (except December). The next regular meeting will be held on Thursday, January 12, 2012.

*Visitors are always welcome.*

Check out our website at [www.bonevalley.net](http://www.bonevalley.net) or Like us on Facebook:

<http://www.facebook.com/?ref=logo#!/pages/Auburndale-FL/Bone-Valley-Gem-Mineral-Fossil-Club/300043398239?ref=mf>

Items contained in the "Stones and Bones" may be reproduced if credit is given to the author, and the "Stones and Bones".

## EMAIL SUBMISSIONS FOR NEWSLETTER TO THE EDITOR

Editor, Cindy Reed





email: [cdreed57@tampabay.rr.com](mailto:cdreed57@tampabay.rr.com)

Phone: (863) 644-6665

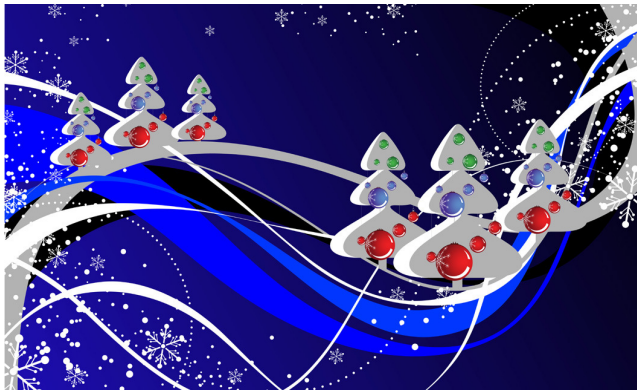
Cell: (863) 255-5256



# 2011

Sun	Mon	Tue	Wed	Thu	Fri	Sat
				1	2	3
4 2pm-?? Meeting @ Happy Place	5	6	7	8	9	10
11 Shop Open 10-4	12	13	14	15	16	17
18 Shop Open 10-4	19	20	21 	22 	23	24
25 	26	27	28	29	30	31 

- Schedule of Events**
- Shop open 12/11, and 12/18
  - 12/4 December Meeting at Happy Place, 2pm
  - 12/21 Hanakkah Begins
  - 12/22 First day of Winter
  - 12/25 Christmas
  - 12/31 New Year's Eve



The shop is open on Sundays from 10-4. If you would like to use it at other time, please call and we'll have someone meet you there.  
 Jim Reed 863-644-6665 or 863-255-0651 or 863-255--5256.